

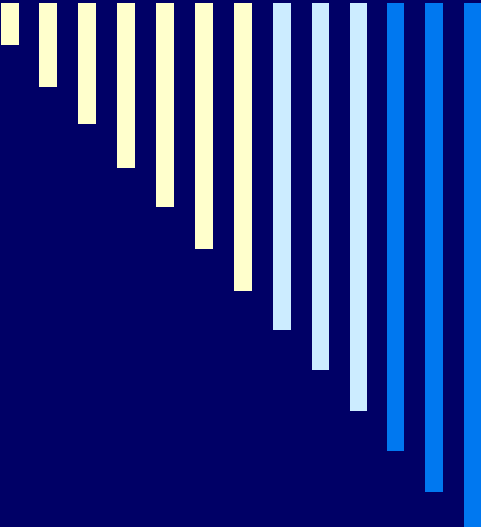

2009 SAFETEA-LU Rescission



Why was there a rescission?

The Rescission

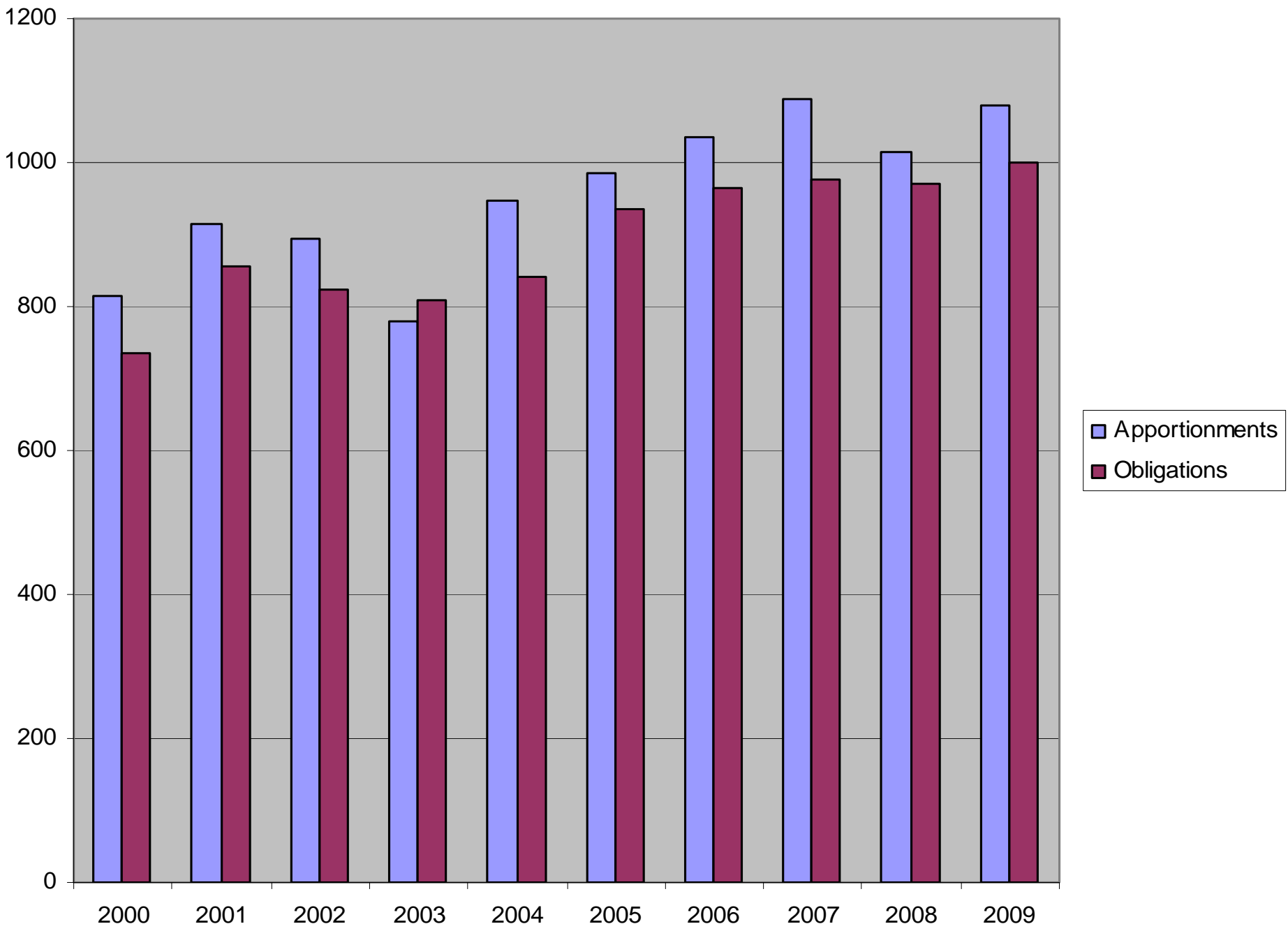
- ❑ In SAFETEA-LU Congress included an \$8.7 billion rescission as a way to meet federal budgeting parameters.
- ❑ The Federal Highway Administration had no discretion in the application of these rescissions.



How was the
rescinded amount
determined?

The Rescission

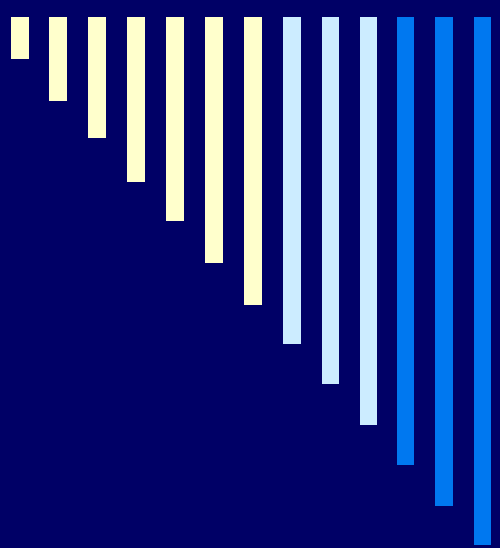
- ❑ States were asked to decide how much and from which programs to rescind funds
- ❑ If a State did not have enough unobligated funds to meet its rescission amount the remaining States had to proportionally account for those funds
- ❑ If a State did not have enough in each program area to cover its required amount then the other program area funds were used



SAFETEA-LU Rescissions by Year and Program Area

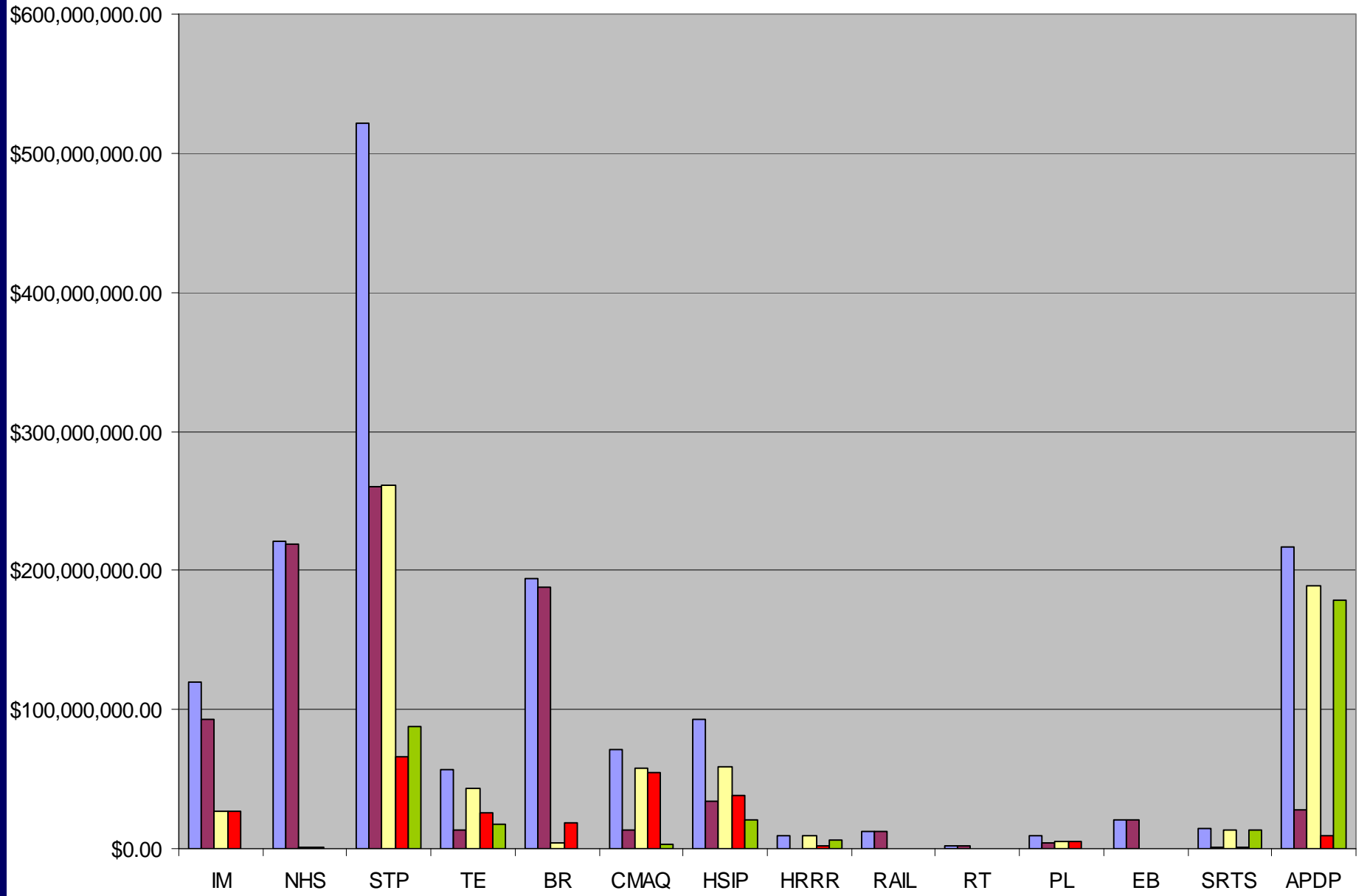


| | 2004 ISTEA P.L. 108- 199 | 2005 SAFETEA- LU P.L. 108- 447 | 2006 SAFETEA- LU P.L. 109- 115 | 2006 SAFETEA- LU P.L. 109- 148 | 2006 SAFETEA- LU P.L. 109- 234 | 2007 SAFETEA- LU P.L. 110-5 | 2007 SAFETEA- LU P.L. 110-28 | 2008 SAFETEA- LU P.L. 110- 161 | 2009 SAFETEA- LU P.L. 111-8 | 2009-EISA P.L. 110-140 | TOTAL |
|--|-----------------------------------|--|--|--|--|--------------------------------------|---------------------------------------|--|--------------------------------------|---------------------------|-------------|
| Interstate Maintenance | 5,631,715 | | | 6,376,309 | 9,555,661 | 30,000,00 | 10,891,022 | 21,837,431 | 31,602,644 | 26,926,365 | 142,821,147 |
| National Highway System | | | | | | | | 22,241,684 | | 1,191,615 | 23,433,299 |
| STP | | | | | | 7,369,596 | | 6,998,151 | 21,603 | 65,966,978 | 80,356,328 |
| Enhancements | | | 13,608,941 | | | | 6,166,661 | 2,995,259 | 10,674,503 | 25,851,464 | 59,296,828 |
| Bridge | | 32,185,921 | 27,217,880 | 6,376,309 | | 40,000,000 | 3,453,766 | 17,662,790 | 12,694,484 | 18,344,107 | 157,935,257 |
| CMAQ | | 2,000,000 | 13,608,941 | 18,348,475 | 9,555,561 | 20,000,000 | 3,918,642 | 6,115,286 | 33,073,930 | 55,083,064 | 161,703,999 |
| Equity Bonus | | | | | | | | 9,000,000 | | 0.33 | 9,000,000 |
| Recreational Trails | | | | | | | | 225,754 | | | 225,754 |
| Metro Planning | | | | | | | | 500,000 | | 5,419,747 | 5,919,747 |
| Safe Routes to School | | | | | | | | | | 700,384 | 700,384 |
| Highway Safety Improvement Program | | | | | | | | | | 38,157,660 | 38,157,660 |
| Railway Highway Crossings | | | | | | | | | | 35,038 | 35,038 |
| High Risk Rural Roads | | | | | | | | | | 2,576,155 | 2,576,155 |
| Appalachian Development Highway Program | | | | | | | | | | 9,595,732 | 9,595,732 |
| TOTAL | 5,631,715 | 34,185,921 | 54,435,762 | 31,101,092 | 19,111,322 | 97,369,596 | 24,430,091 | 87,576,355 | 88,067,164 | 249,848,311 | 691,757,329 |



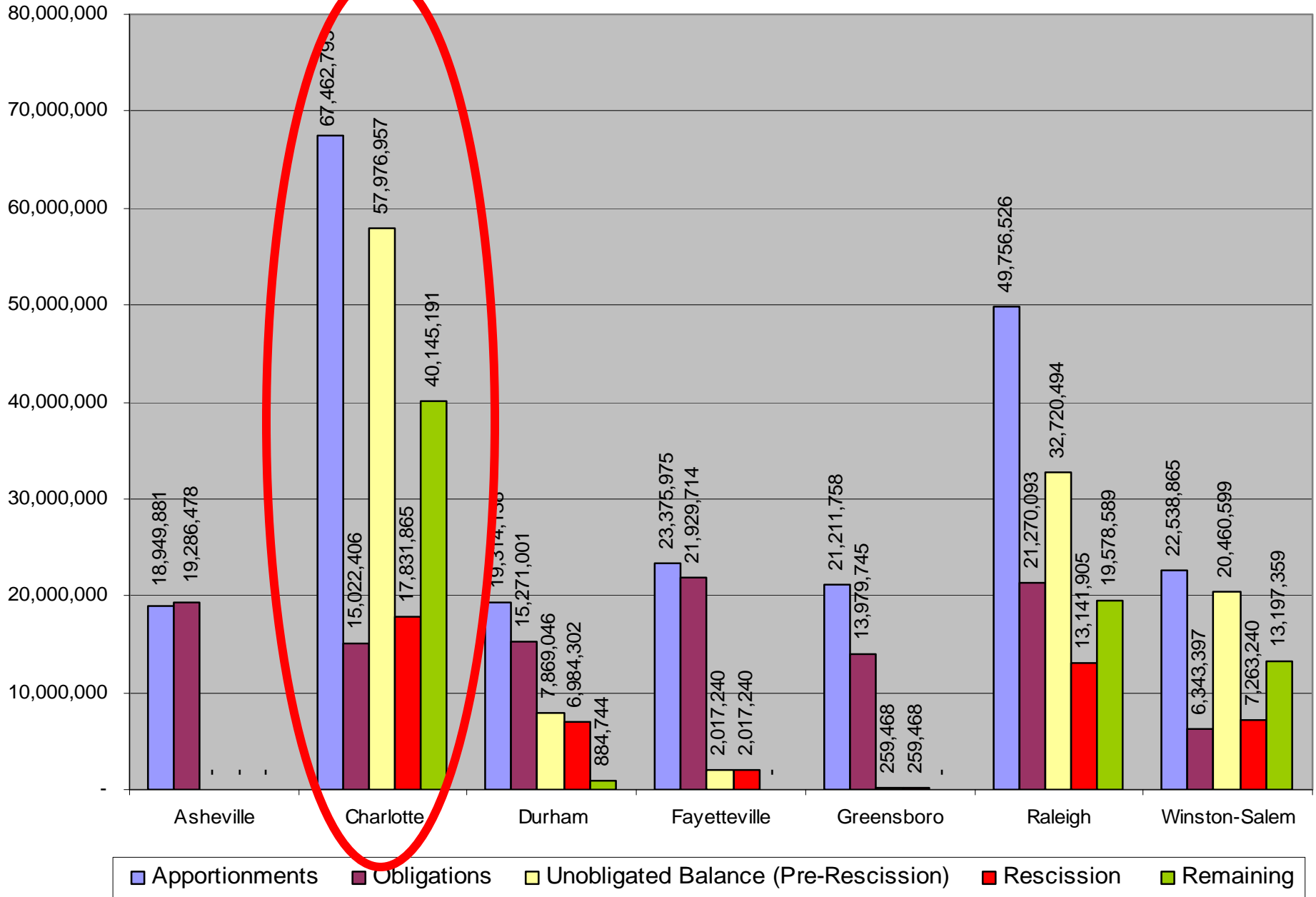
Why were certain
program areas
affected more than
others?

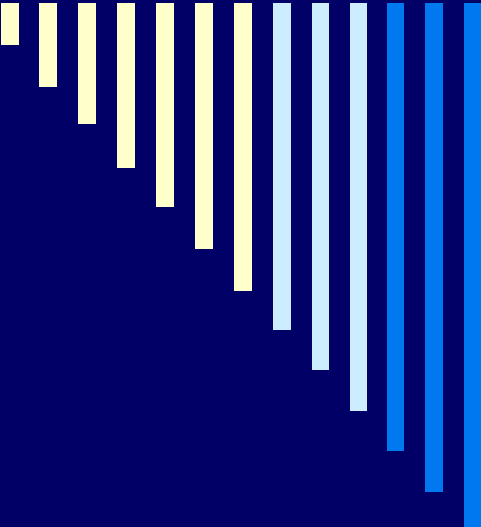
FY 2009 Funding By Program Area



■ Apportionments/ Available
 ■ Obligations
 ■ Unobligated Balance (Pre-Rescission)
 ■ 2009 Rescission
 ■ Remaining

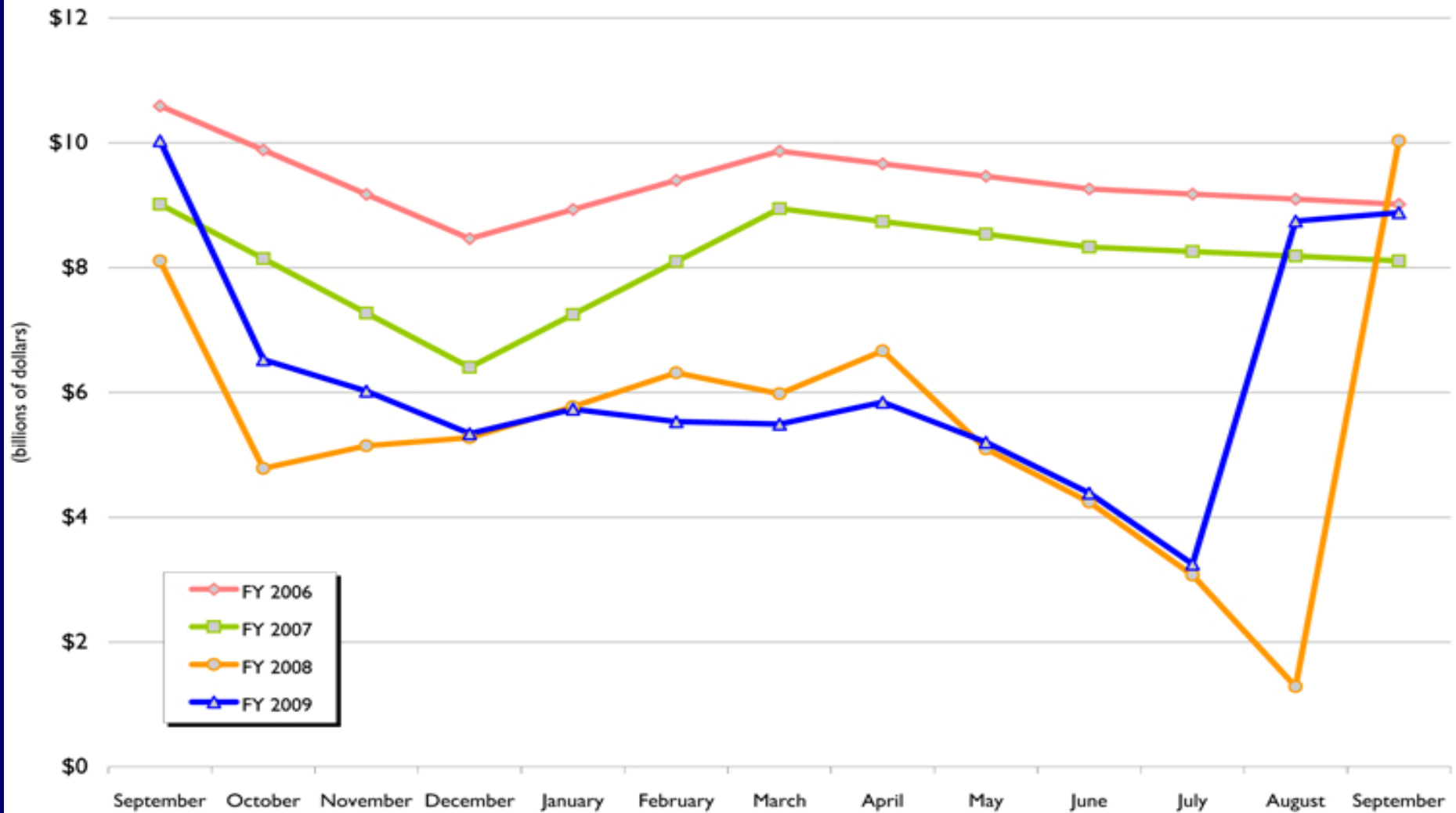
TMA STP-DA Funds 2004-2009





How can we prevent
this from happening
again?

Highway Account Balance



Ending balance for FY 2008 includes \$8.017 billion transferred from the General Fund in September 2008 pursuant to Public Law 110-318.

Ending balance for FY 2009 includes \$7 billion transferred from the General Fund in August pursuant to Public Law 111-46.

Looking Ahead

The development of the
Federal program
should better reflect
the revenue situation



Contact Information

Unwanna B. Dabney

Planning and Program Development Manager

FHWA North Carolina Division

unwanna.dabney@dot.gov

919-747-7023